



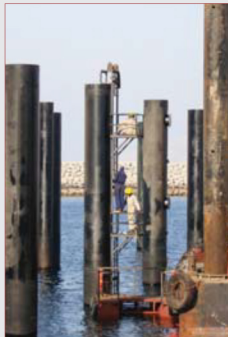
#### KHASSAB PORT

The seabed in Khassab is rocky. Pre-drilling was used before the piles could be positioned and concreted in. The pipes were filled with concrete to increase their moment of inertia and resistance to shocks.



#### MAIDEN JOURNEY

The fast ferry is seen entering the port of Shinas on its maiden journey. The main breakwater has been extended by 110 m and the lee breakwater shortened by 100 m.



#### STEEL PILES

Steel piles 1100 mm in diameter were driven in the seabed to absorb the energy of the vessel when approaching the steel floating deck. They are ready to receive the proper permanent fenders.

#### EMBARKING AND DISEMBARKING

The fast ferry has arrived to Khassab. Passengers leave the vessel and others go aboard. Cars are driven out and others are driven in. Many curious residents come to admire the wonderful vessel.



#### SHINAS AND KHASSAB PORTS

The government of Oman decided to link major provinces by sea transport, particularly the Musandam Province with mainland. For this purpose, they purchased ultra-modern fast ferries which operate from the Sultan Qaboos Port in Muttrah and also from Port Shinas and Khassab. Saroj secured the contract to make modification and upgrading works to Port Shinas and Khassab to accommodate the operations and maneuvering of the new vessels.

The works included dredging the entrance channel and mooring basin. They also included the extension to main and lee breakwaters, skiff beach and ramp for the fishermen boats, and several onshore amenities to service the vessels: fuel supply, potable water supply, power supply, collection of sewage water and rubbish, an immigration hall and car parks. The port now harbours the fishermen boats, the Royal Oman Police (ROP) vessels, and the fast ferries.

#### ONSHORE WORKS

New facilities were provided in Shinas: Car park, passengers' hall, immigration building and utilities. A main asphalt access road was built to reach the new compound. A fuel tank and fuel transfer pipeline to the jetty were installed.

